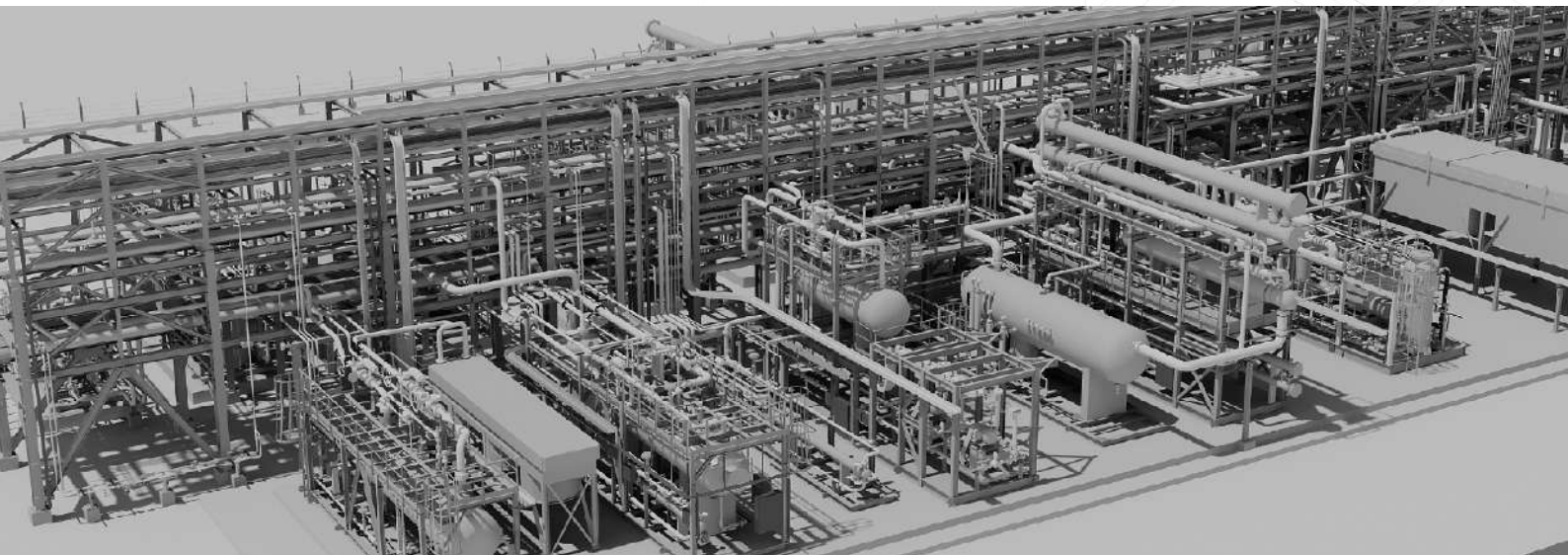


PMECH^o

BLUEPRINTS OF HONOUR



info@pmecheng.com | www.pmecheng.com



Who We Are

Founded in 1988, PMECH is a global leader in Engineering, Procurement, and Construction Management (EPCM) services. For over four decades, we have consistently delivered specialized, innovative solutions to industries worldwide. Our expertise spans a broad range of sectors, including:

- Oil & Gas
- Refineries
- Power Plants & Power Generation
- Offshore Platforms
- Petrochemicals
- Speciality Chemicals
- Tank Terminals
- Utilities
- Ammonia & Fertilizer Plants
- Flare & Incinerator Facilities
- Water Treatment
- Infrastructure & Steel
- Food & Textiles Plants
- Plant Digitization & Optimization

We have built our reputation on the ability to meet the evolving demands of highly specialized projects, ensuring that every solution is tailored to the client's needs while adhering to global standards.

What We Do

PMECH offers comprehensive full-spectrum engineering and design services. Our areas of expertise include:

Process Facilities and Clean Energy Solutions

Our expertise extends to specialized projects such as Early Production Facilities, Gas Processing and Sweetening, Gas Treatment Plants, Compression Stations, Oil Treating and Desalting Plants, Combined Cycle Power Plants, Ammonia Plants, LPG Facilities, Modular Skid Engineering, Process Skids, Gas Distribution, Balance of Plant Engineering, Flare Gas Recovery, and Vapour Recovery Units, Blue Ammonia, Hydrogen etc.

Tank Farms, Storage and Associated Facilities

We have a strong track record in designing and executing Tank Farms with Cone Roof, Dome Roof, Floating Roof, Double Wall Tanks, Mounded Bullets, Silos, and Spheres. Additionally, we deliver solutions for Skim Tanks with performance guarantees, Airports, Polymer Plants, Sulphuric Acid Plants, Pulp & Paper, and Sulphate Removal Packages.

Advanced Engineering Studies

We perform special studies like Process Safety Studies, Technical Safety, Surge Analysis, Stress Analysis, CFD Analysis, FEA Analysis, Blast Load Analysis, and Blast-Resistant Building Design. We also specialize in Health, Safety, Environment (HSE) studies, including QRA, Consequence Analysis, FERA, HAZID, HAZOP, SIL, LOPA, ALARP, Noise Analysis, and Firefighting system design.

Why Choose **PMECH**

Full-spectrum Engineering Expertise:

From Concept, FEED, BASIC to Detailed Engineering

~4 decades

of experience with all Engineering & Design disciplines under one roof.

80%+ Repeat Orders & Referral Client base:

Clients preferred choice

500,000+ Manhours Annually:

Delivering projects of all scales, from small to large.

Focus on Quality:

ISO 9001:2015 certified.

Qualifications:

Listed as an approved vendor/ consultant by 100+ clients, globally.

Global Reach & Standards Compliance:

Delivering tailored solutions in **40+ countries**, adhering to diverse international codes and standards.

Sustainable Growth:

Driven by strong relationships and satisfied clients.

Advanced Software Capabilities:

High-end latest software across all disciplines.

Relationship-Focused:

Long-term partnerships based on trust.

Trusted by Fortune 500 Companies:

Partnering with industry leaders to drive success.

Continuous Improvement:

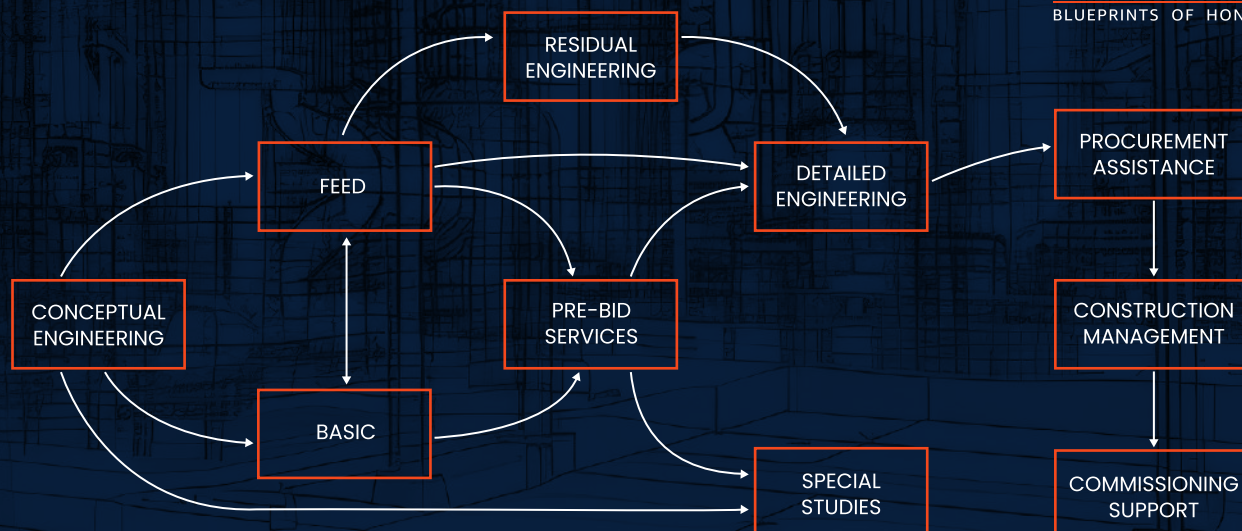
Relentlessly pursuing excellence.

Agility & Flexibility:

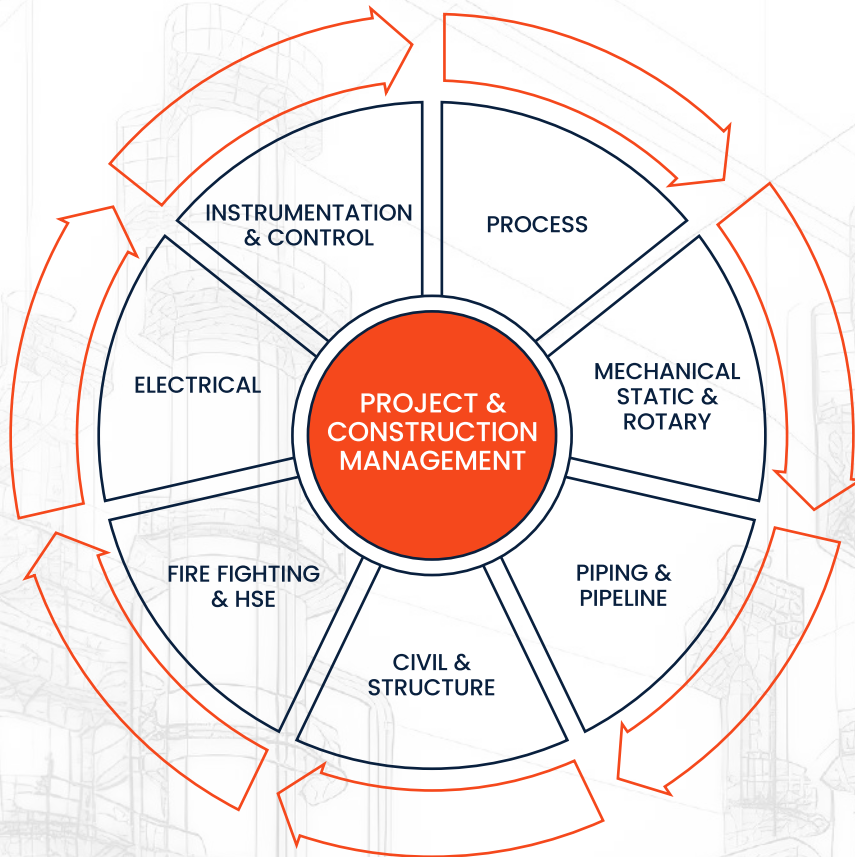
Quick to adapt to dynamic Client and Project needs.

Safety & Sustainability:

HSE is at the core of our projects. We are committed to sustainability and environmental stewardship.



All disciplines under one roof



Solutions delivered in >40 Countries



PMECH CONSULTANT PVT. LTD.

Texas, USA • Mumbai, India • Pune, India • Abu Dhabi, UAE • Oman • Taiwan

info@pmecheng.com | www.pmecheng.com